

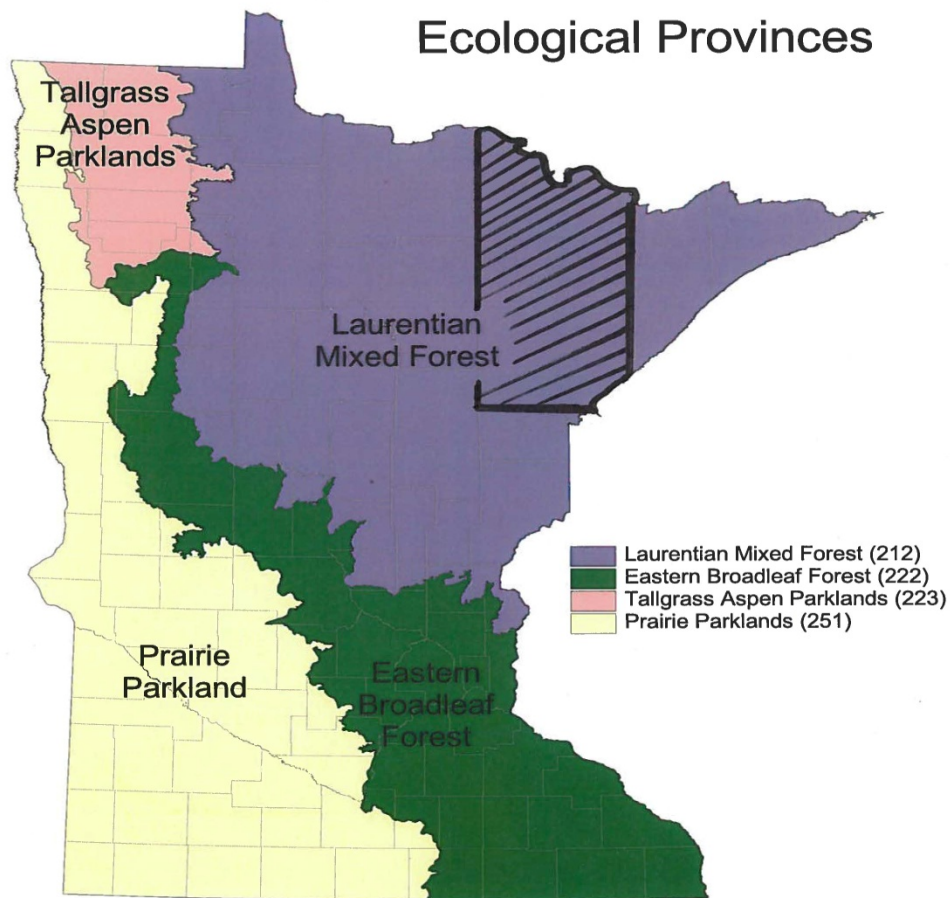
WE ARE ROOTED IN BIOMASS



ST LOUIS COUNTY



Ecological Provinces



Equal opportunity to participate in and benefit from programs of the Minnesota Department of Natural Resources is available to all individuals regardless of race, color, creed, religion, national origin, sex, marital status, status with regard to public assistance, age, sexual orientation or disability. Discrimination inquiries should be sent to MN-DNR, 500 Lafayette Road, St. Paul MN 55155-4031; or the Equal Opportunity Office, Department of the Interior, Washington DC 20240.

This document is available in alternative formats to individuals with disabilities by calling (651) 296-6157 (Metro Area) or 1-888-MINNDNR (MN Toll Free) or Telecommunication Device for the Deaf/TTY: (651) 296-6484 (Metro Area) or 1-800-657-3929 (Toll Free TTY).

© 1999, State of Minnesota,
Department of Natural Resources

Compiled by:
Beltrami County
Blandin Paper Company
MN Center for Environmental Advocacy
MN Department of Agriculture
MN Department of Natural Resources
Natural Resources Conservation Service
Pottlatch Corporation
USDA Forest Service
U.S. Fish and Wildlife Service

For more information contact:
ECS Specialist
MN DNR, Division of Forestry
Resource Assessment Program
413 SE 13 Street
Grand Rapids, MN 55744
(218) 327-4449 ext 239

September, 2000



Division of Forestry
Ecological Land
Classification Program

GOT WOOD?



2 HORSE POWER SKIDDER



NERCC Campus



Northeast Regional Corrections Center

- Original 32,000 s.f. facility built in 1931
- Main facility houses 150 residents
- Many building systems are 40+ years old
- 3,200 acre “farm” campus with numerous buildings of varying use, age and condition



**NOT ECONOMICALLY
OR
ENVIRONMENTALLY
SUSTAINABLE**



350 MILLION BARRELS IN MINNESOTA ANNUALLY



IS THIS A GOOD OPTION?



FACE THE PROBLEM “HEAD ON”



IT AIN'T ROCKET SCIENCE!



YOU ARE HERE



WHY WOONDN'T YOU USE BIOMASS?

