

Perceptions of Wood Energy: Present & Past



Dr. Sarah Mittlefehldt, Northern Michigan University
Heating the Midwest Conference, October 2016

Perceptions of Wood Energy



- Part I: Present

- The Poultney Woodshed Project: How did public perceptions influence this community-based initiative?

- Part II: Past

- How have public perceptions about wood energy changed over time?

Green Mountain College's CHP Facility



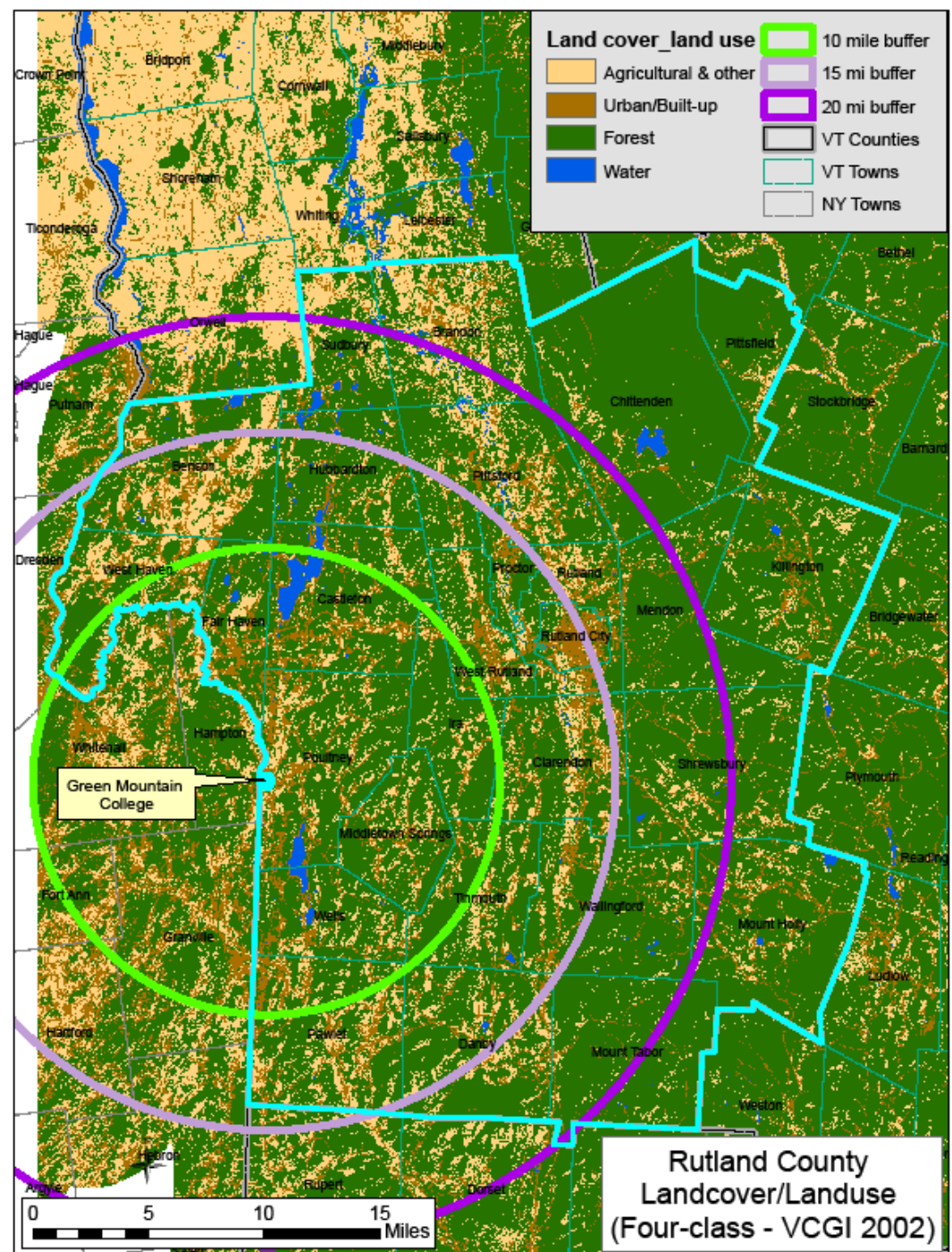
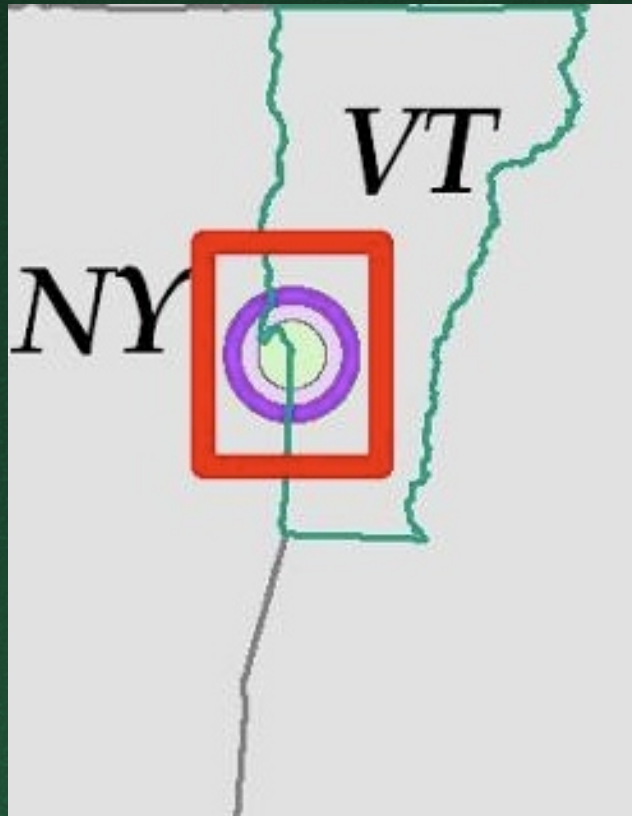
- 80% of GMC's heat
- 20% of GMC's electricity



Poultney Woodshed Project

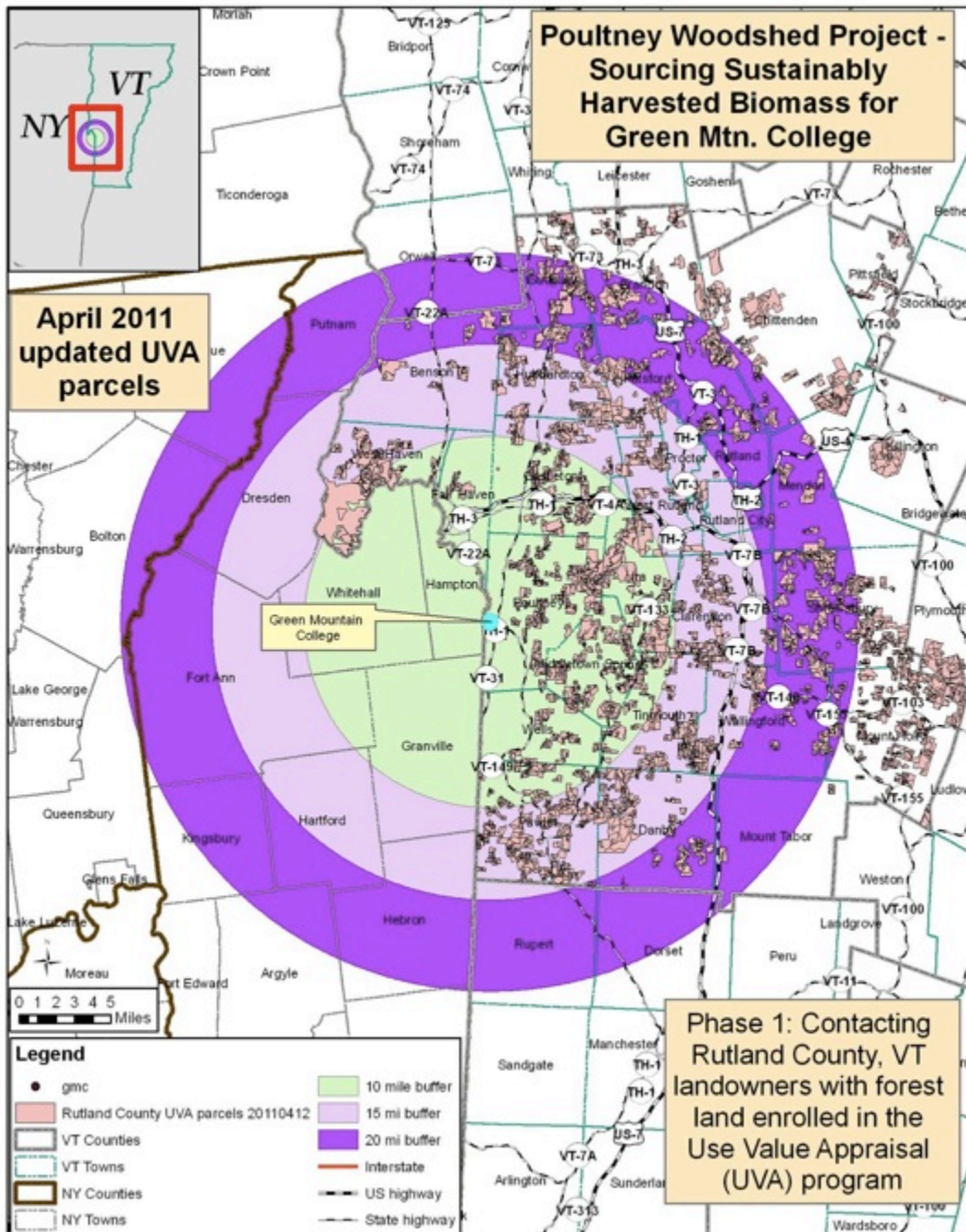


Defining the Woodshed



Vermont's Use Value Appraisal Program

- 20% of *Rutland County* enrolled in *UVA*



Landowner Perceptions



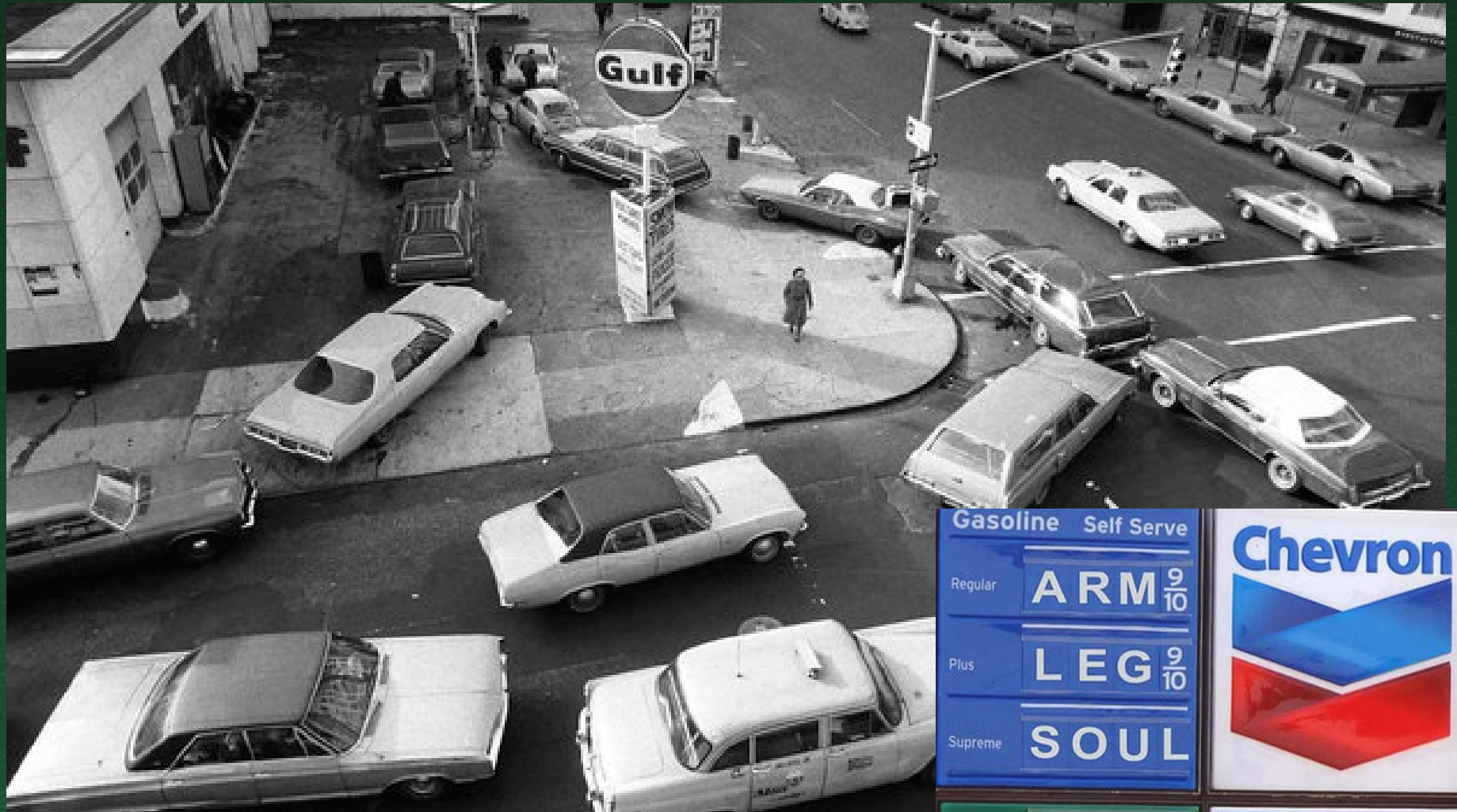
Dairy Farming in VT: “A Hard Way to Lose Money”



Student Attitudes Towards Biomass



Part II: The Past



Gasoline		Self Serve	
Regular	ARM	9/10	
Plus	LEG	9/10	
Supreme	SOUL		
Diesel No. 2	KIDS		with TECHRON



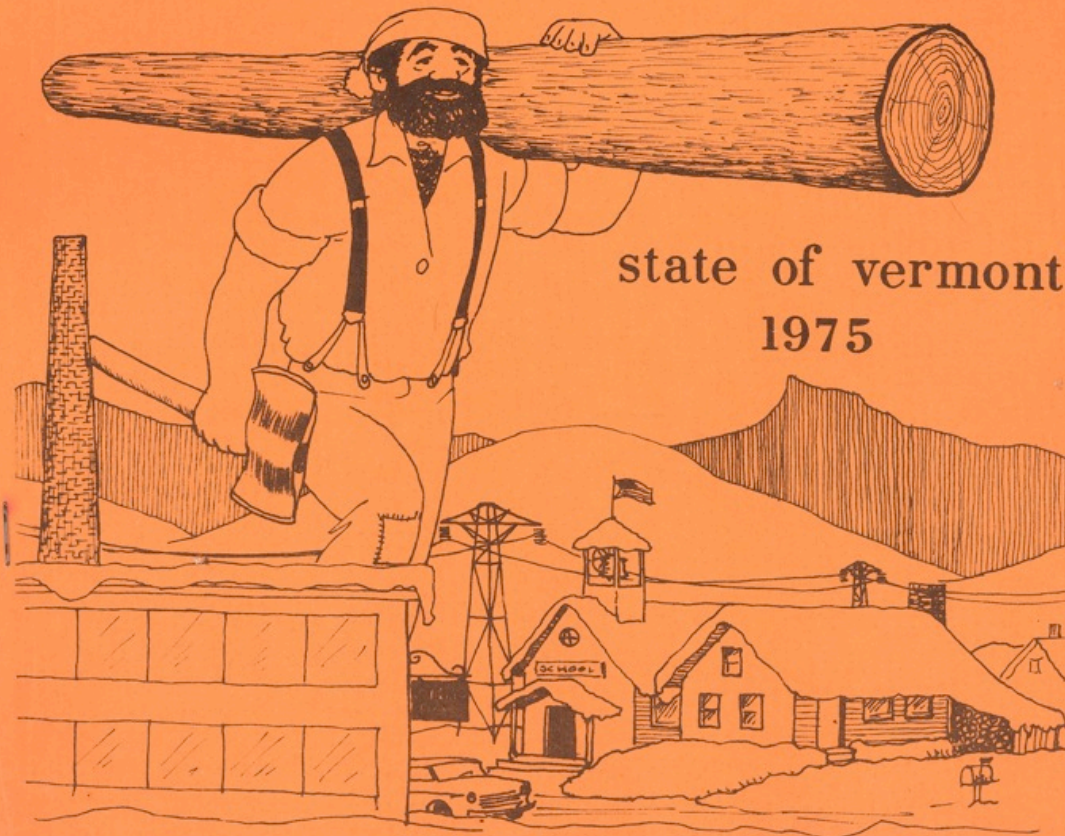


Governors task force on

WOOD

as a source of

ENERGY



state of vermont
1975

Forest Products Industry: Biomass Pioneers



Pragmatic Activism

1. Problem-solving, Action-based Orientation
2. Energy Pluralism
3. Civic Engagement & Democratic Claims

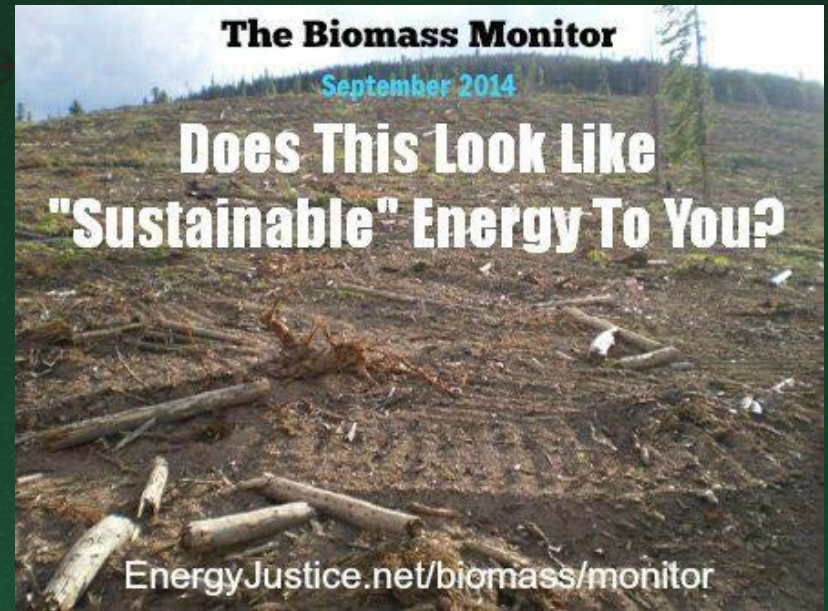
Clearcut Controversies



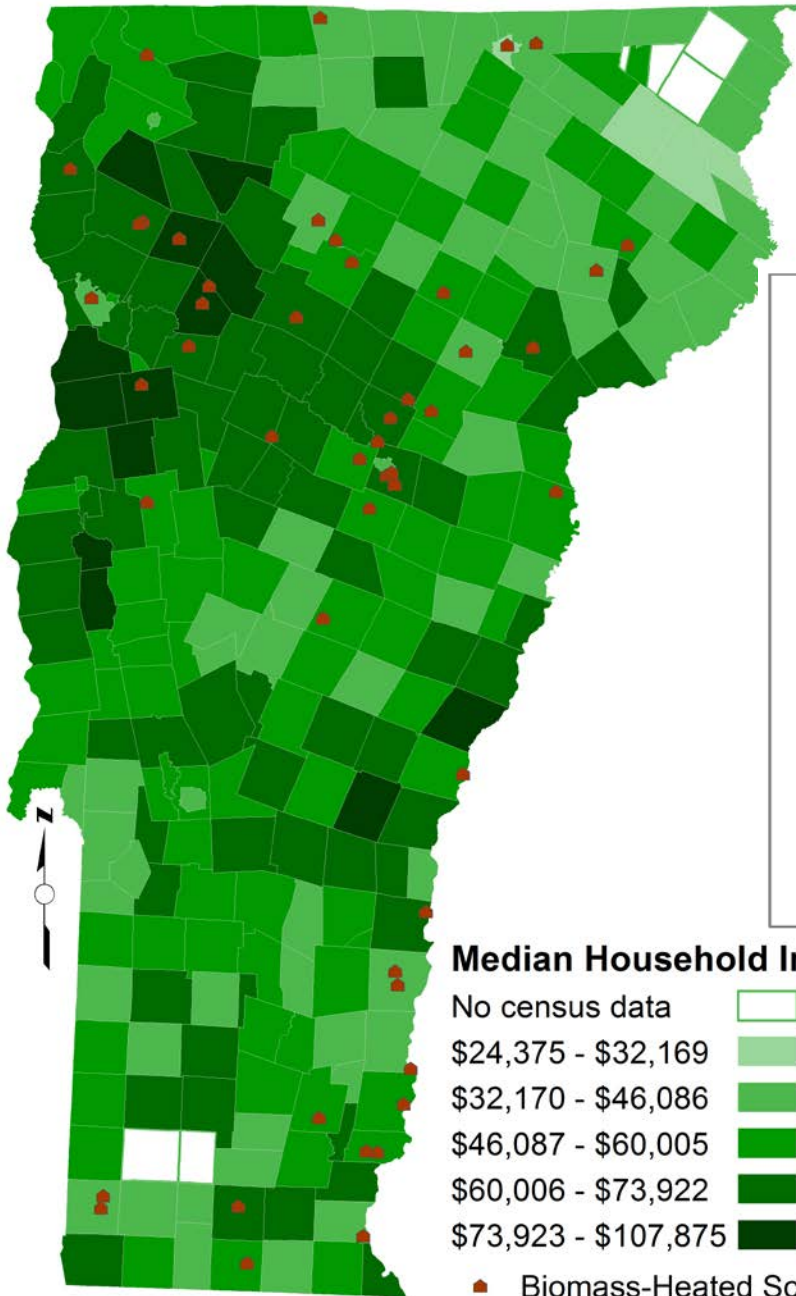
Biomass Debates

- Different ideas about proper forest management & environmental protection
- Different attitudes toward resource extraction—urban v. rural
- Fundamental questions about the decentralization and centralization of political power

Biomass and Environmental Justice



- 2015 NAACP reports that African Americans living near power plants that burn either biomass or fossil fuels are more likely to suffer a variety of health effects than other Americans

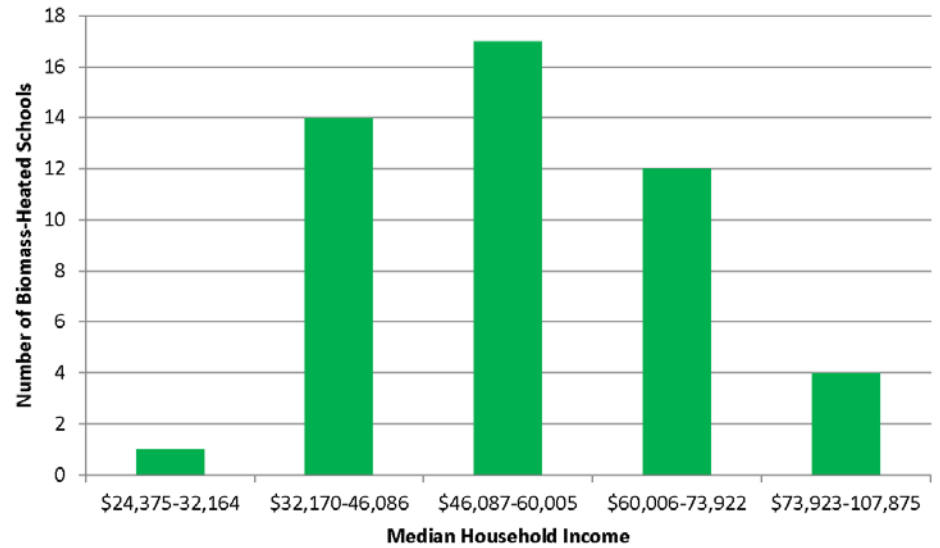


Median Household Income

- No census data
- \$24,375 - \$32,169
- \$32,170 - \$46,086
- \$46,087 - \$60,005
- \$60,006 - \$73,922
- \$73,923 - \$107,875

■ Biomass-Heated Schools

Number of Biomass-Heated Schools by Income



Perceptions of Wood Energy

Influenced by:

- Scale of technology & application
- Ideas about decision-making & governance structures
- Attitudes toward resource extraction





Thank You &
Questions