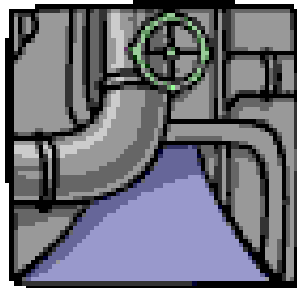


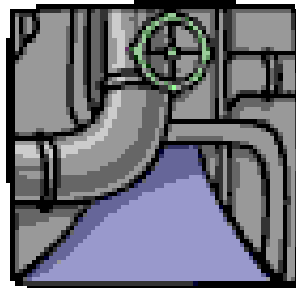


# Pinecrest Medical Care Facility



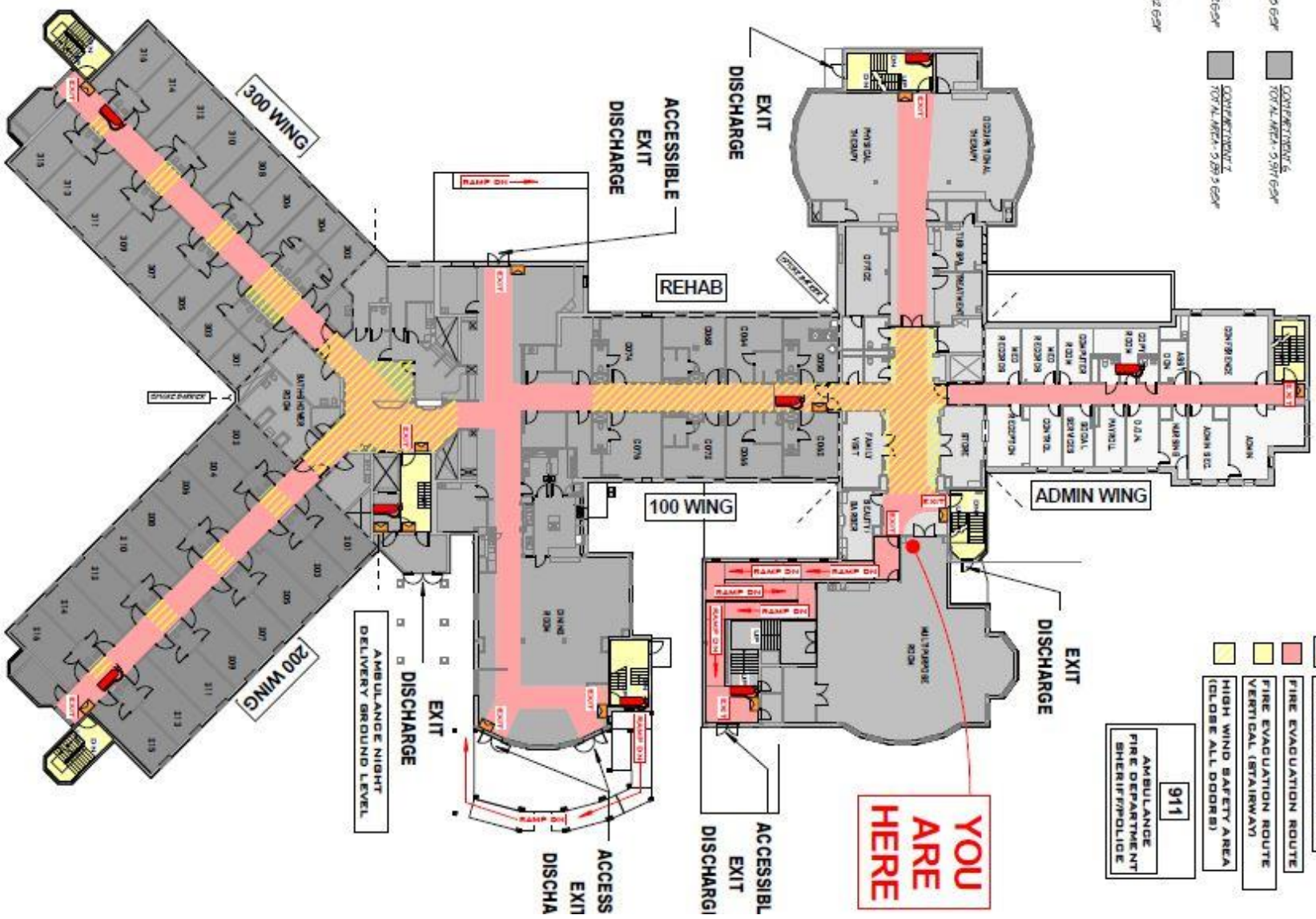


# Pinecrest Medical Care Facility



# Building Layout (Airplane View)

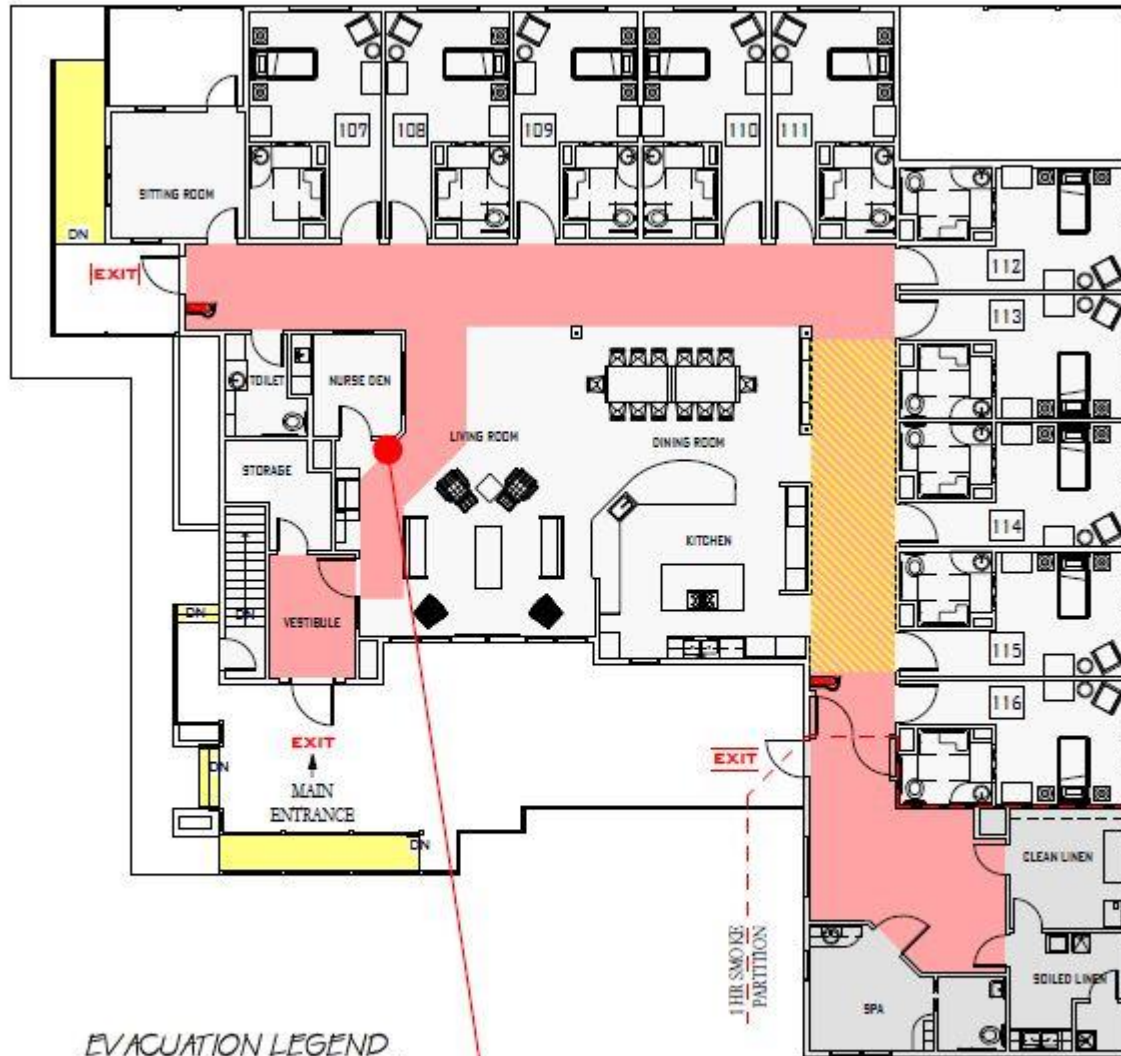




- COMPARTMENT 1  
TOTAL AREA - 4,236 GSF
- COMPARTMENT 2  
TOTAL AREA - 2,699 GSF
- COMPARTMENT 3  
TOTAL AREA - 4,172 GSF
- COMPARTMENT 4  
TOTAL AREA - 4,202 GSF
- COMPARTMENT 5  
TOTAL AREA - 12,749 GSF
- COMPARTMENT 6  
TOTAL AREA - 5,917 GSF
- COMPARTMENT 7  
TOTAL AREA - 5,289 GSF

- FIRE EXTINGUISHER
- FIRE ALARM PULL BOX
- FIRE EVACUATION ROUTE
- FIRE EVACUATION ROUTE VERTICAL (STAIRWAY)
- HIGH WIND SAFETY AREA (CLOSE ALL DOORS)
- 911
- AMBULANCE FIRE DEPARTMENT SHERIFF/POLICE





EVACUATION LEGEND

-  FIRE EXTINGUISHER
-  FIRE ALARM PULL BOX
-  FIRE EVACUATION ROUTE

**YOU ARE HERE**



- Chip Delivery Building & Smokestack
- Solar Panels
- Clean Burning









- Walking Floors
- Auger
- Safety Cages
- Type of Chips – Green



CEP  
& OUT  
PERSONNEL

**DANGER**

AUTHORITY  
PERSONNEL

**DANGER**  
IONIZING RADIATION

RESERVED  
PARKING  
↑





**SF SOLID FUELS, INC.**  
**GASIFICATION TYPE BURNER**  
ONE SALT CREEK LANE, HINSDALE, IL 60521 (312) 789-6677



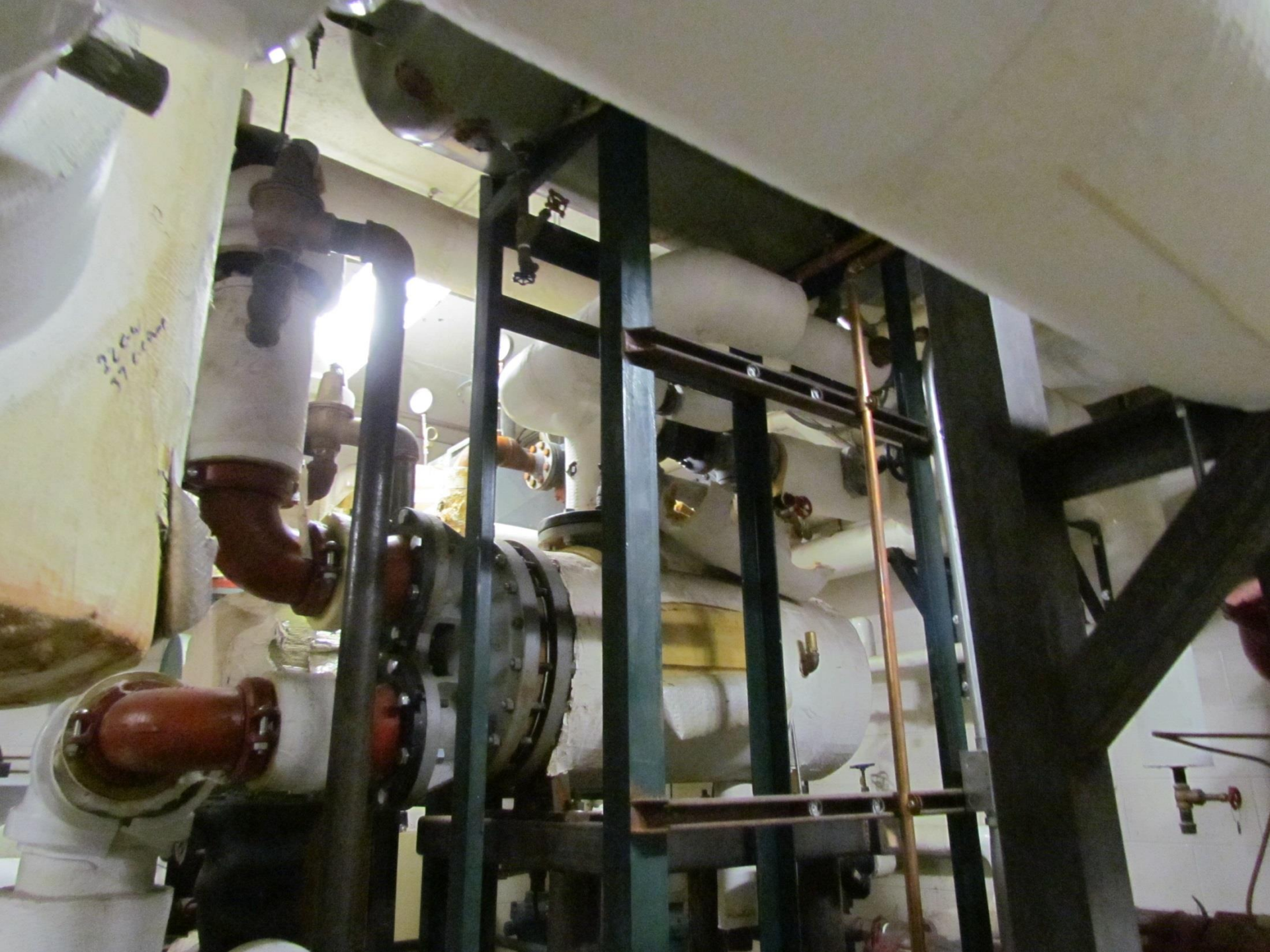




- Heat Exchangers
- Steam to Hot Water
- One Lead – Two Lag
- DDC Controlled
- Set on a reset schedule













- Domestic Hot Water
- Laundry Hot Water
- All Steam Heated
- Condensate Return Pumps





- Multi-Purpose Room Air Handler
- VFD Driven
- Works off CO
- Exhaust Air Recovery



**cissell**

**PERMANENT PRESS CONTROL**  
INSTRUCTIONS  
1. HOT WATER ONLY  
2. HOT DRYER  
3. HOT TUMBLER  
4. HOT IRON



CLEAN LIGHT SENSITIVE BABY

**cissell**

**PERMANENT PRESS CONTROL**  
INSTRUCTIONS  
1. HOT WATER ONLY  
2. HOT DRYER  
3. HOT TUMBLER  
4. HOT IRON



CLEAN LIGHT SENSITIVE BABY

**JDC**







MILNOR E-P PLUS

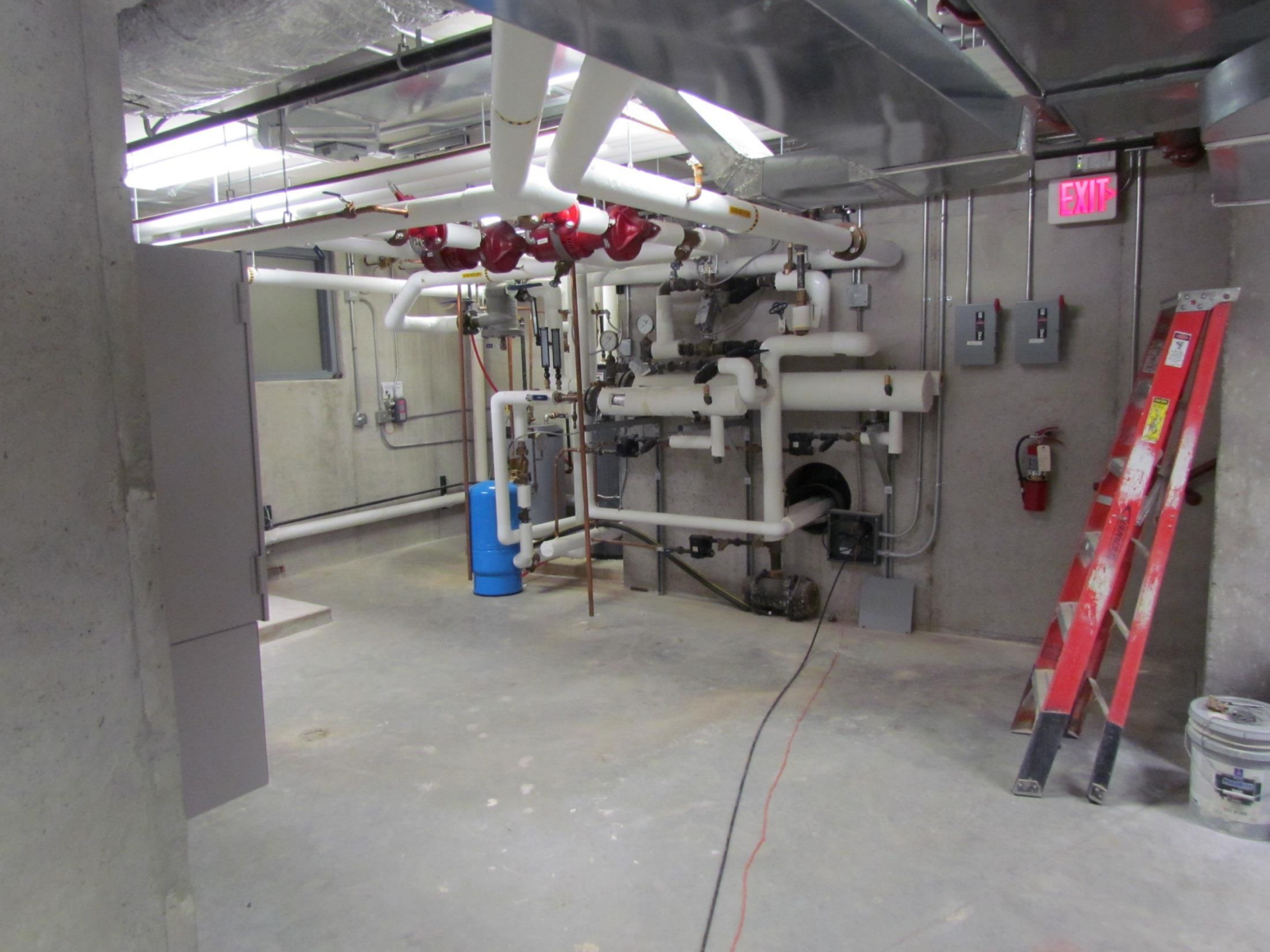
MILNOR





- Absorption Chiller
- Low Pressure Steam
- Makes 42 degree chilled water
- Draws 9A @ 480V











- Ash Conveyor
- Combustion Air Fan
- Boiler Blowdown
- Inspection Door





This is how  
we feel when  
this boiler is  
running...

Boo Hoo!

\$\$\$\$\$\$