

Heating the Northeast: Strategies & Impact

Heating the Midwest 2016

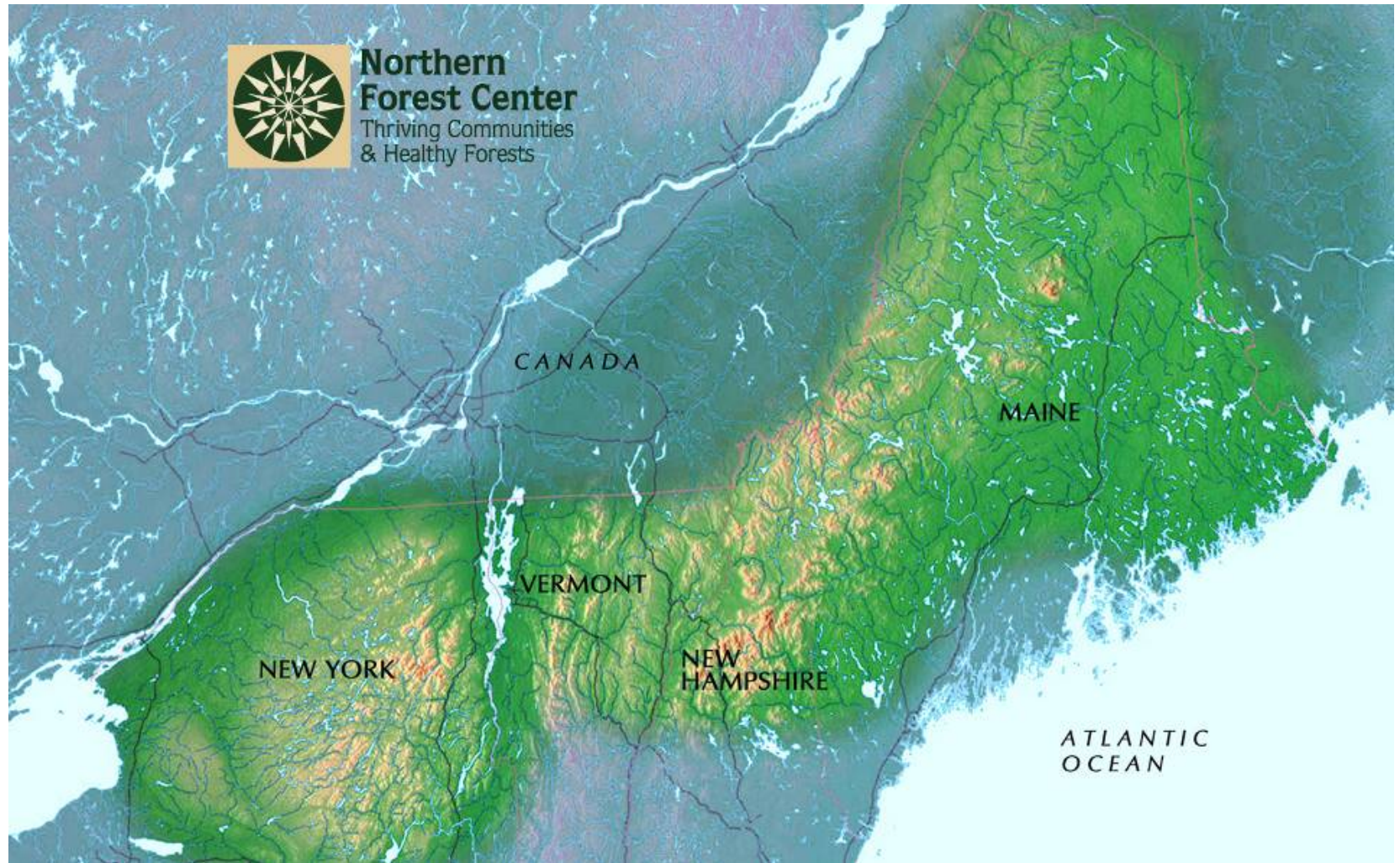
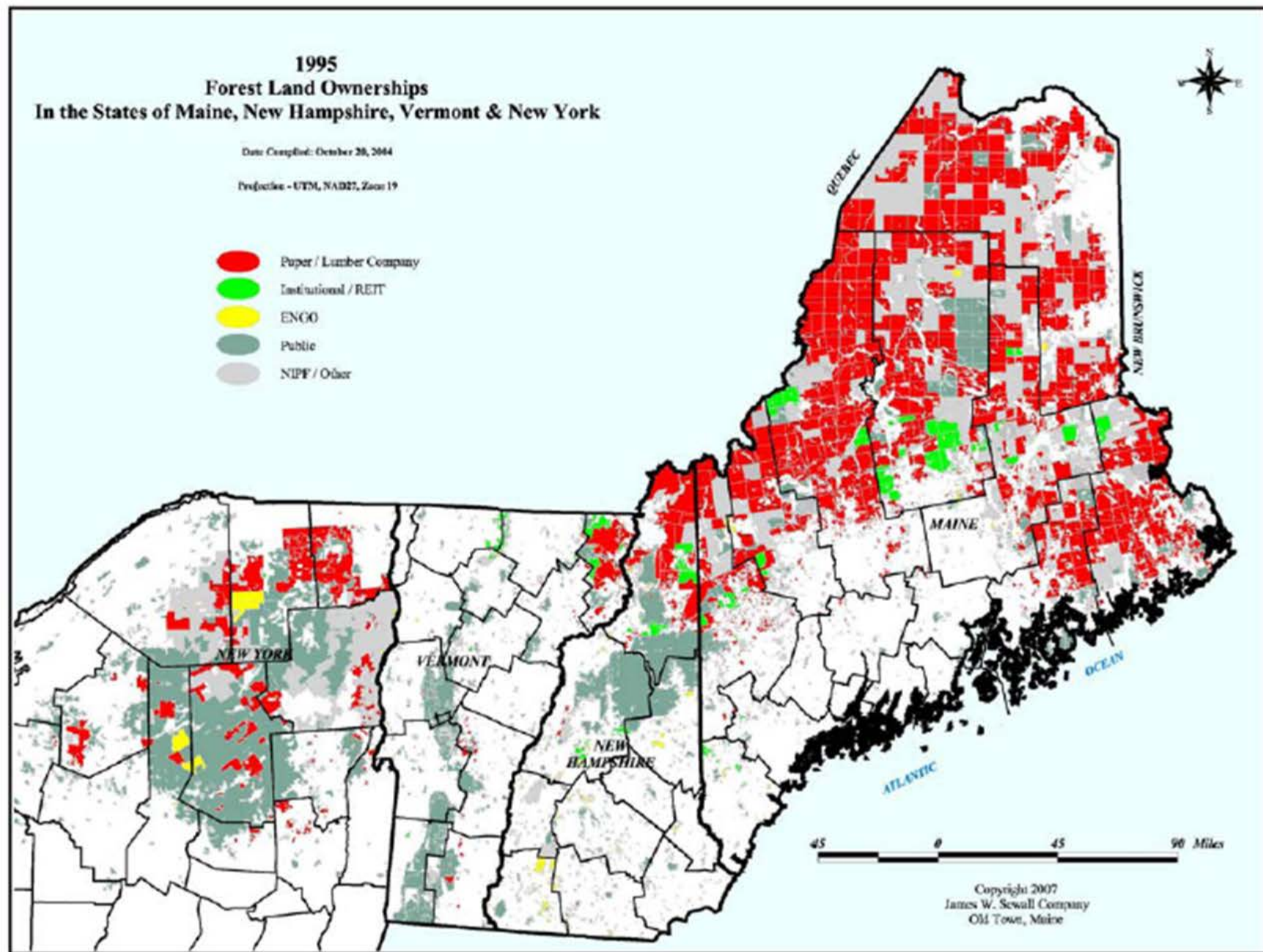




Figure 2.10 Northeast Timberland Ownership, 1995

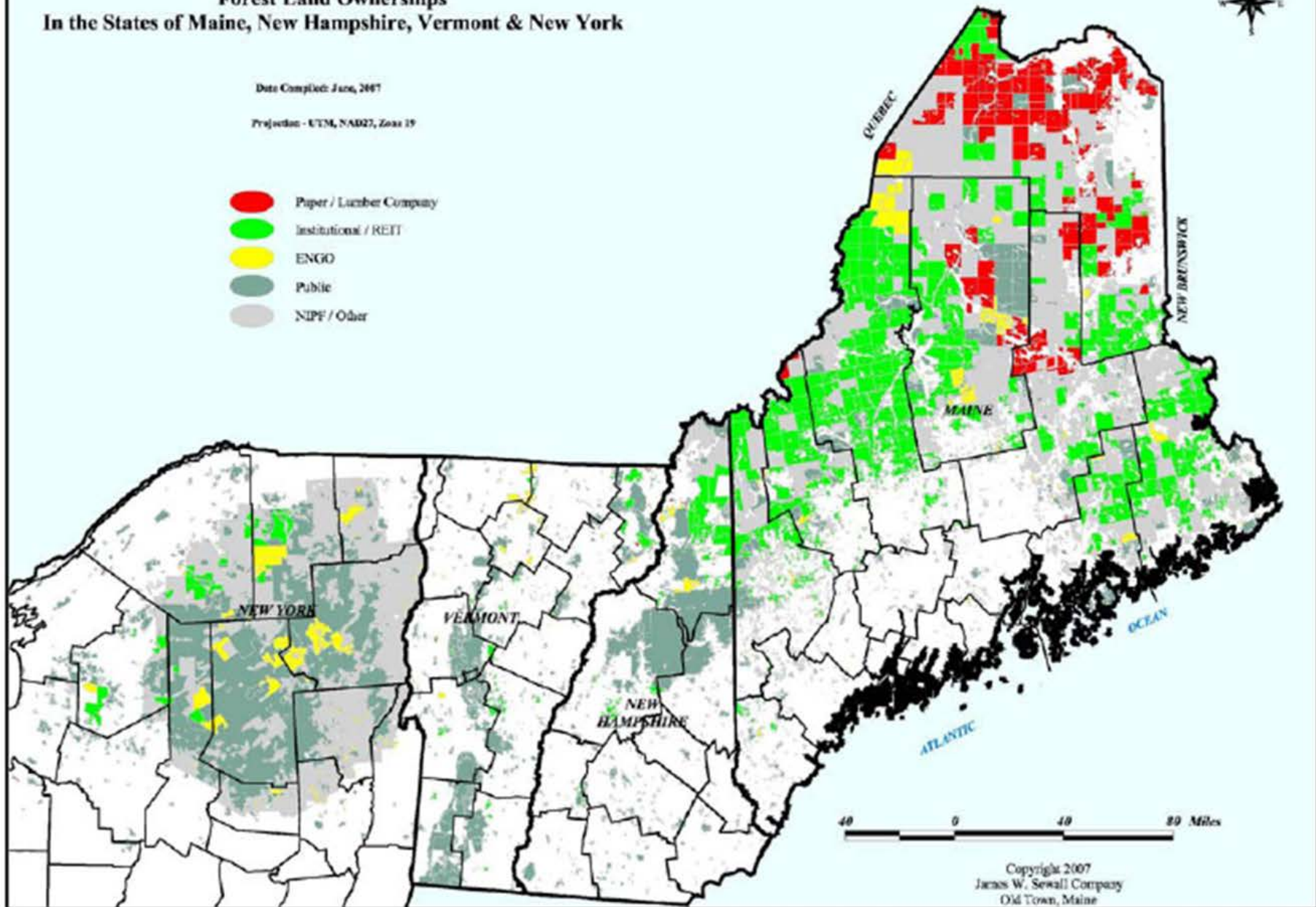


2007 Forest Land Ownerships In the States of Maine, New Hampshire, Vermont & New York

Date Compiled: June, 2007

Projection - UTM, NAD27, Zone 19

-  Paper / Lumber Company
-  Institutional / REIT
-  ENGO
-  Public
-  NIPF / Other



Copyright 2007
James W. Sewall Company
Old Town, Maine

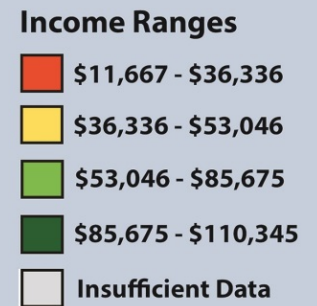
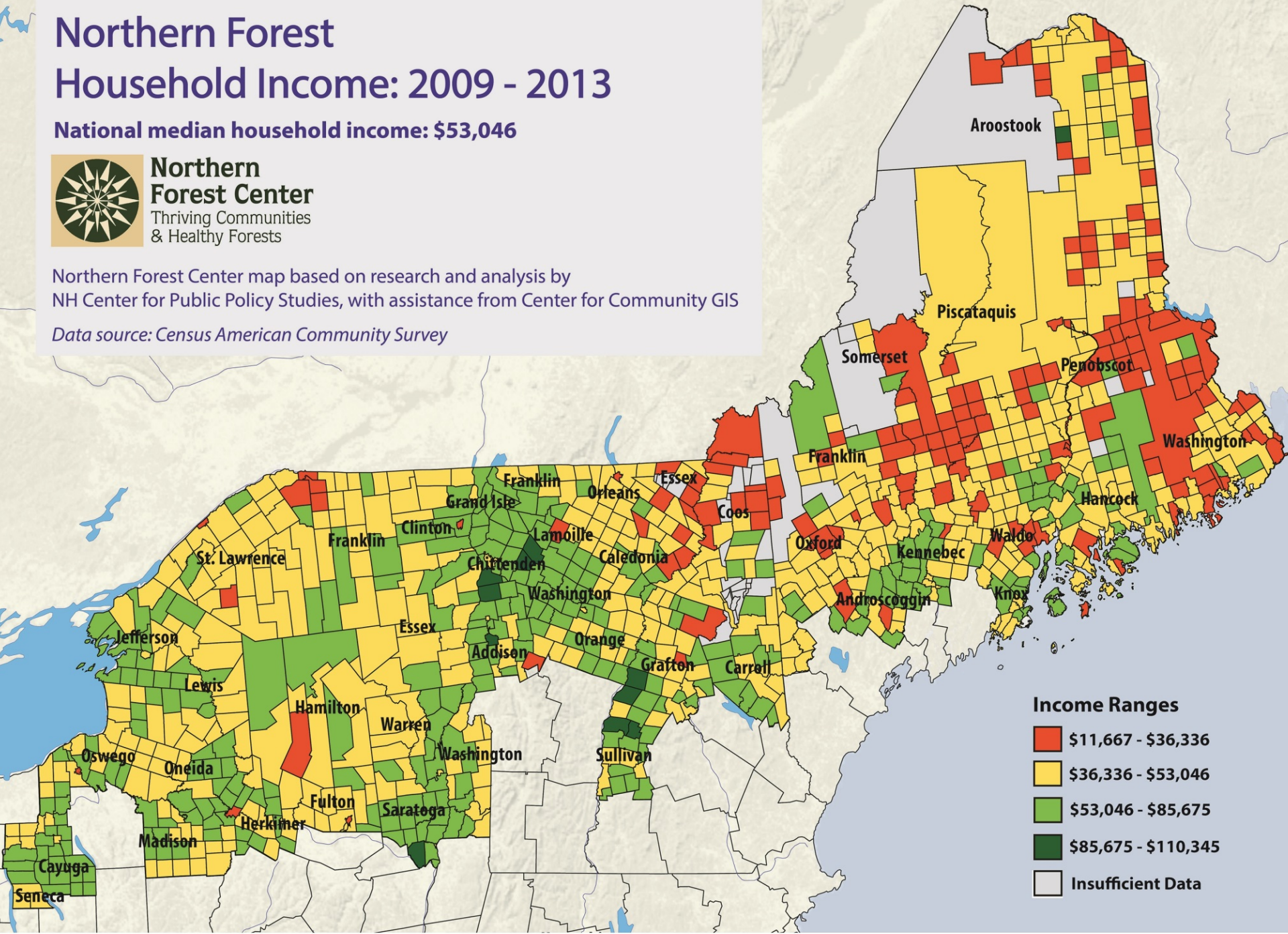
Northern Forest Household Income: 2009 - 2013

National median household income: \$53,046

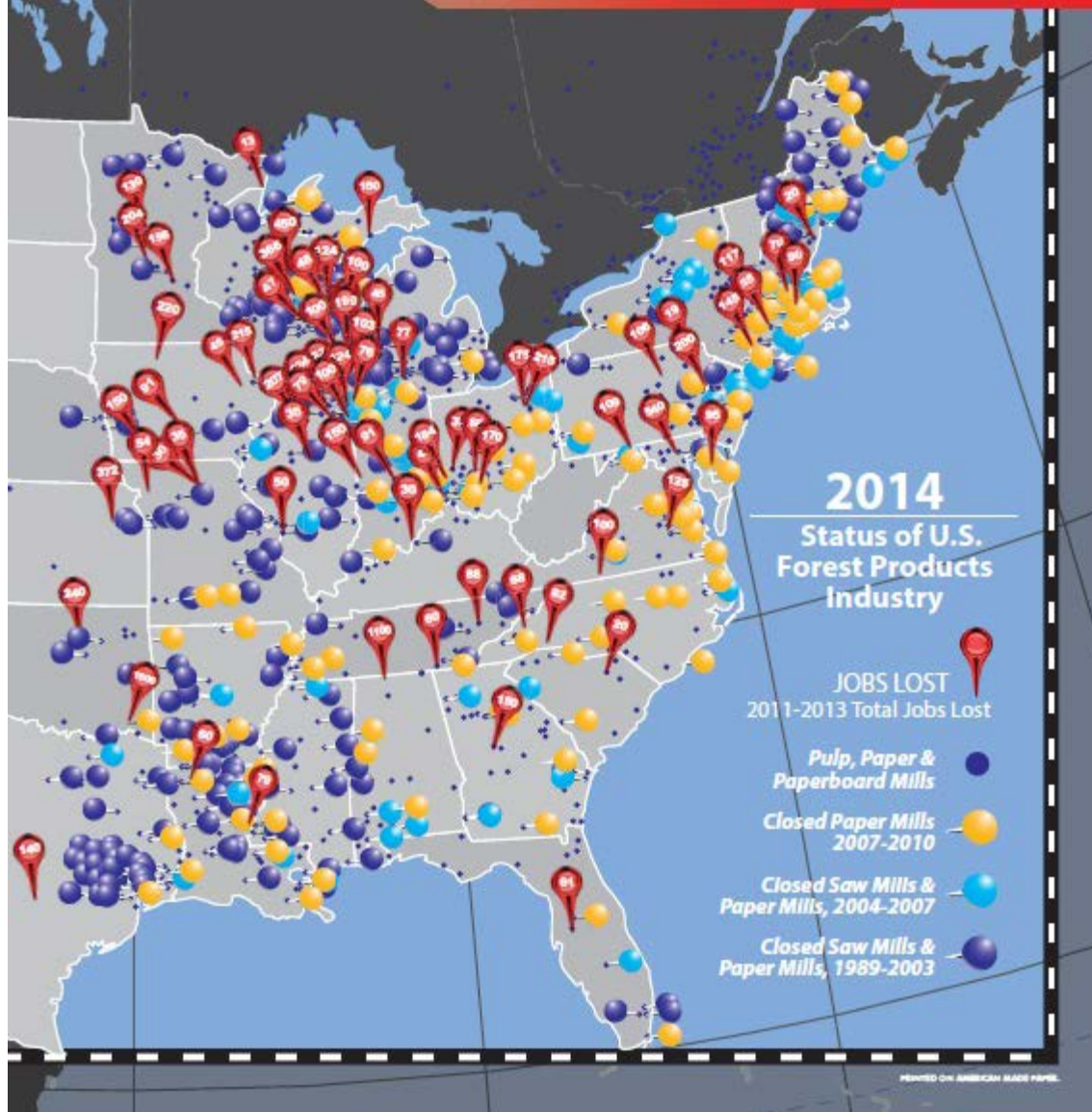


Northern Forest Center map based on research and analysis by NH Center for Public Policy Studies, with assistance from Center for Community GIS

Data source: Census American Community Survey



2011-2013 MILL CLOSURES



<http://isthmus.com/news/cover-story/newpage-paper-mill-closing-has-left-kimberly-wisconsin-fighting-for-its-life/>



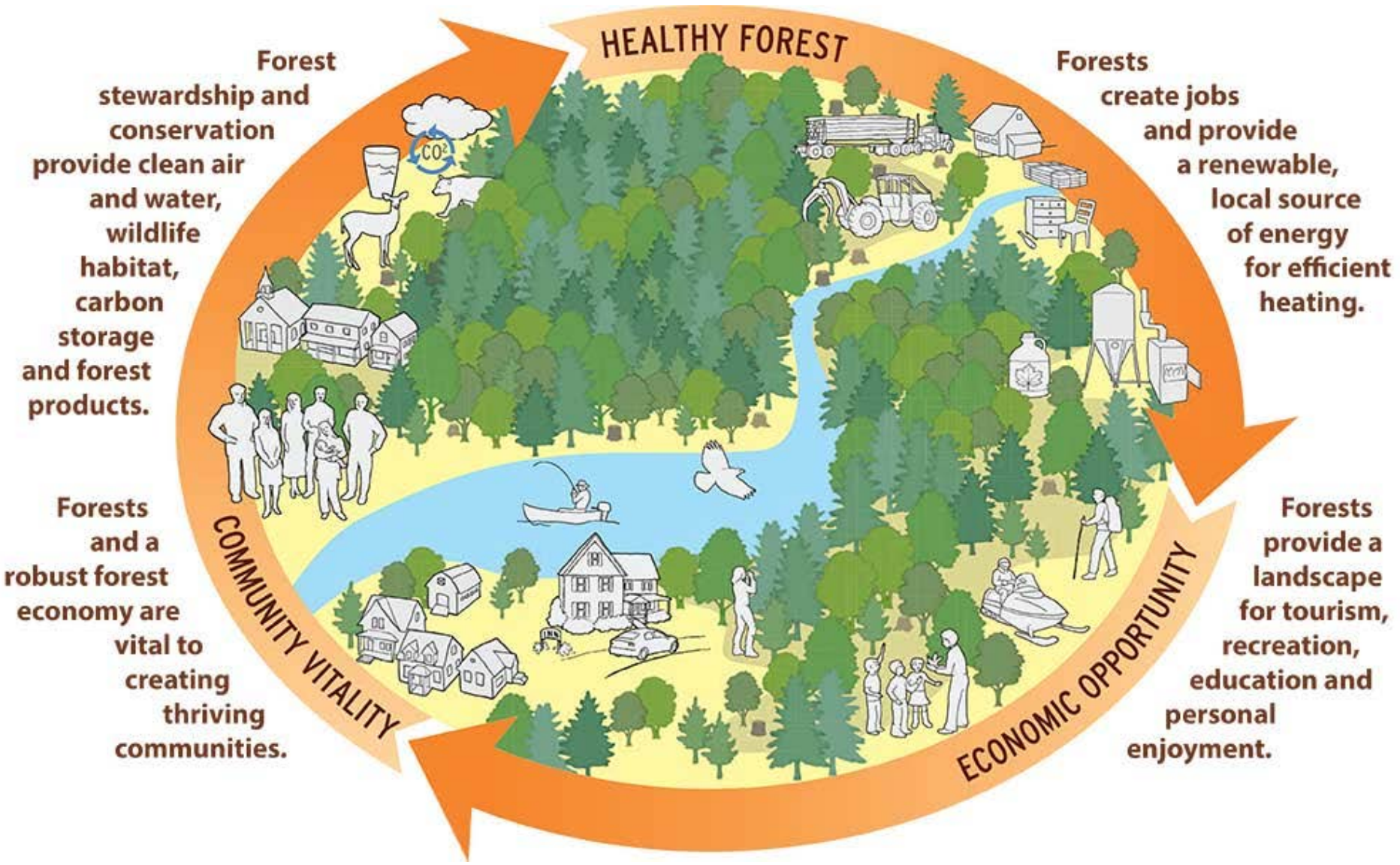
A Paper Mill Goes Quiet, and the Community It Built Gropes for a Way Forward

By JESS BIDGOOD AUG. 2, 2014



The Great Northern Paper mill closed a century after it gave rise to Millinocket, Me.
Tristan Spinski for The New York Times

http://www.nytimes.com/2014/08/03/us/a-paper-mill-goes-quiet-and-the-community-it-built-gropes-for-a-way-forward.html?_r=0



HEALTHY FOREST

Forest stewardship and conservation provide clean air and water, wildlife habitat, carbon storage and forest products.

Forests create jobs and provide a renewable, local source of energy for efficient heating.

Forests and a robust forest economy are vital to creating thriving communities.

Forests provide a landscape for tourism, recreation, education and personal enjoyment.

COMMUNITY VITALITY

ECONOMIC OPPORTUNITY



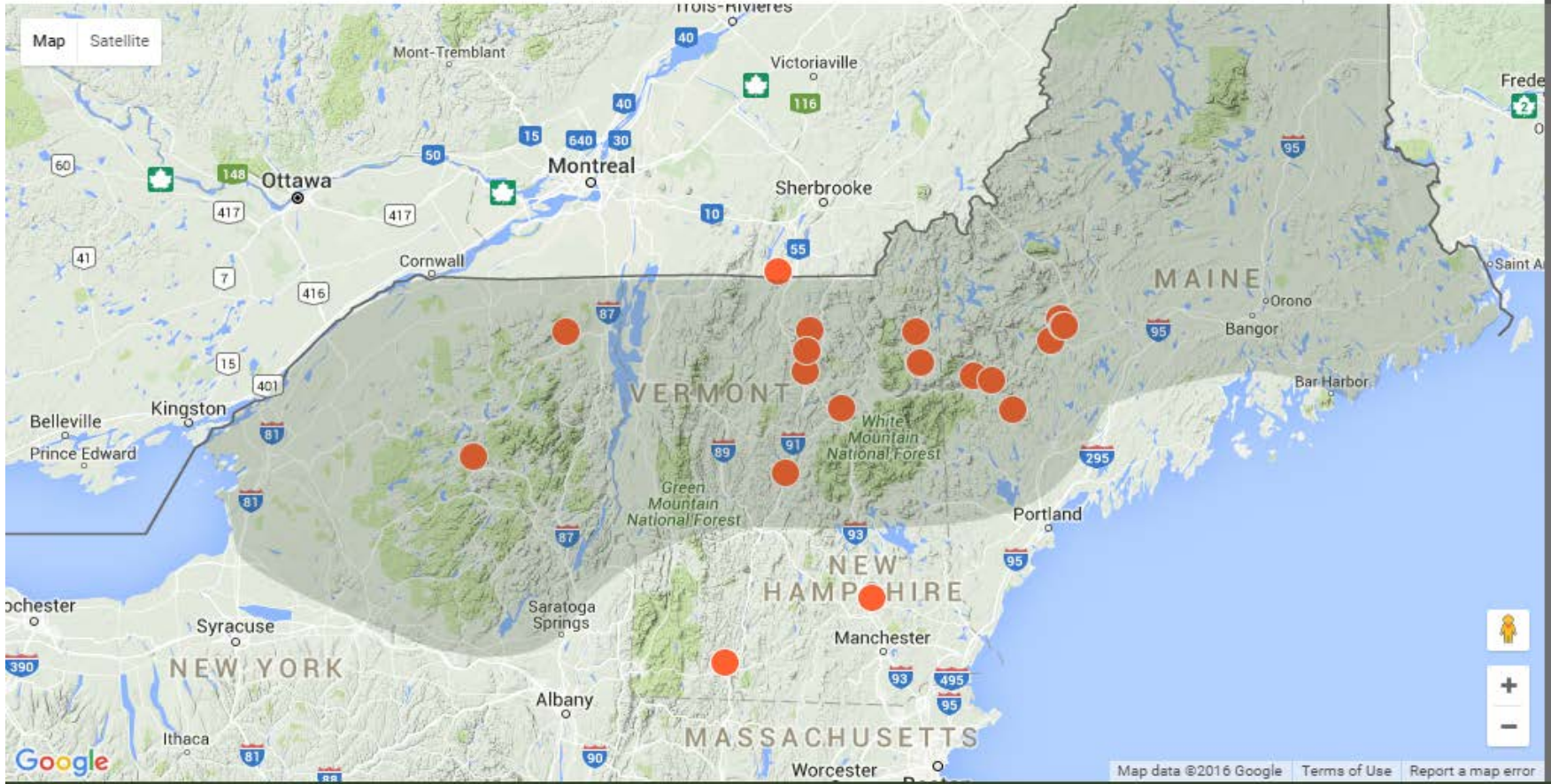
BOWL SHOP

SANDERSON'S WOODEN BOWLS



Model Neighborhood Project





<https://northernforest.org/the-center-and-region/interactive-map>

Result of 120+ Model Neighborhood boilers since 2012



\$1,609,664

Savings on Fuel

Amount saved by homeowners who switched to wood pellets.

[See the Math](#)



5,603

Net Carbon Dioxide Reduction

Tons net carbon dioxide avoided by not burning oil.

[See the Math](#)



\$4,130,668

Total Impact Value to Local Economy

Total impact of dollars continuing to circulate in local economy.

[See the Math](#)



MIE SYS
MaineEnergySystems.com

AutoPellet[®]







REDUCING
FOSSIL FUEL
USE

Old South
Congregational Church

and Affirming United Church of Christ

Worship 9:30

School 9:30

Rev. Alexis Fuller-Wright

are Welcome Here



Going forward...

- Coordination between advocates
- Significant, unified message from trusted sources
- A broader stakeholder base
- Better trade collaboration





Maura Adams - madams@northernforest.org - 603-229-0679 x114 - www.northernforest.org